

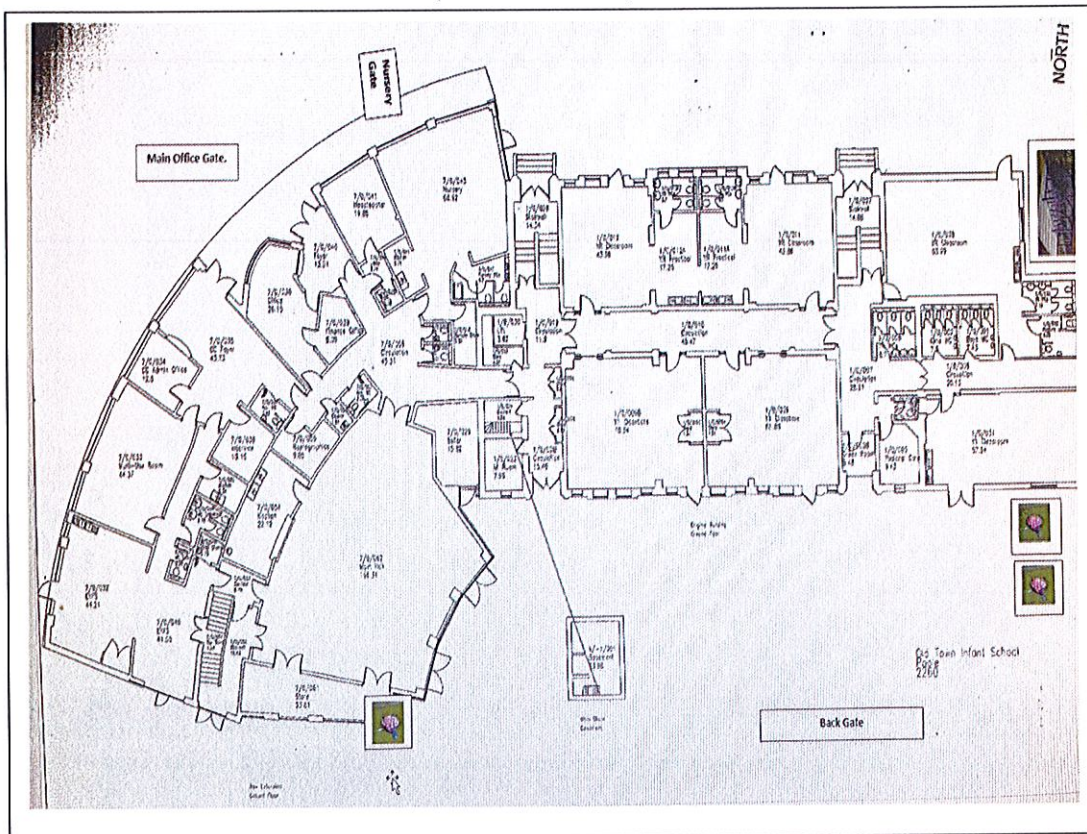
Old Town Infant School Travel Plan

Old Town Infant School Travel Plan

January 2024

School details

- Breakfast Club starts from 7.30, School hours are from 8.45 – 15.15. After school club runs up until 17.00.
- The school has a nursery, Reception, YR1 and YR2. We also have 2 Winchelsea satellite classes. Total children on role 226.
- Total number of Staff on role 53 (not all full time)



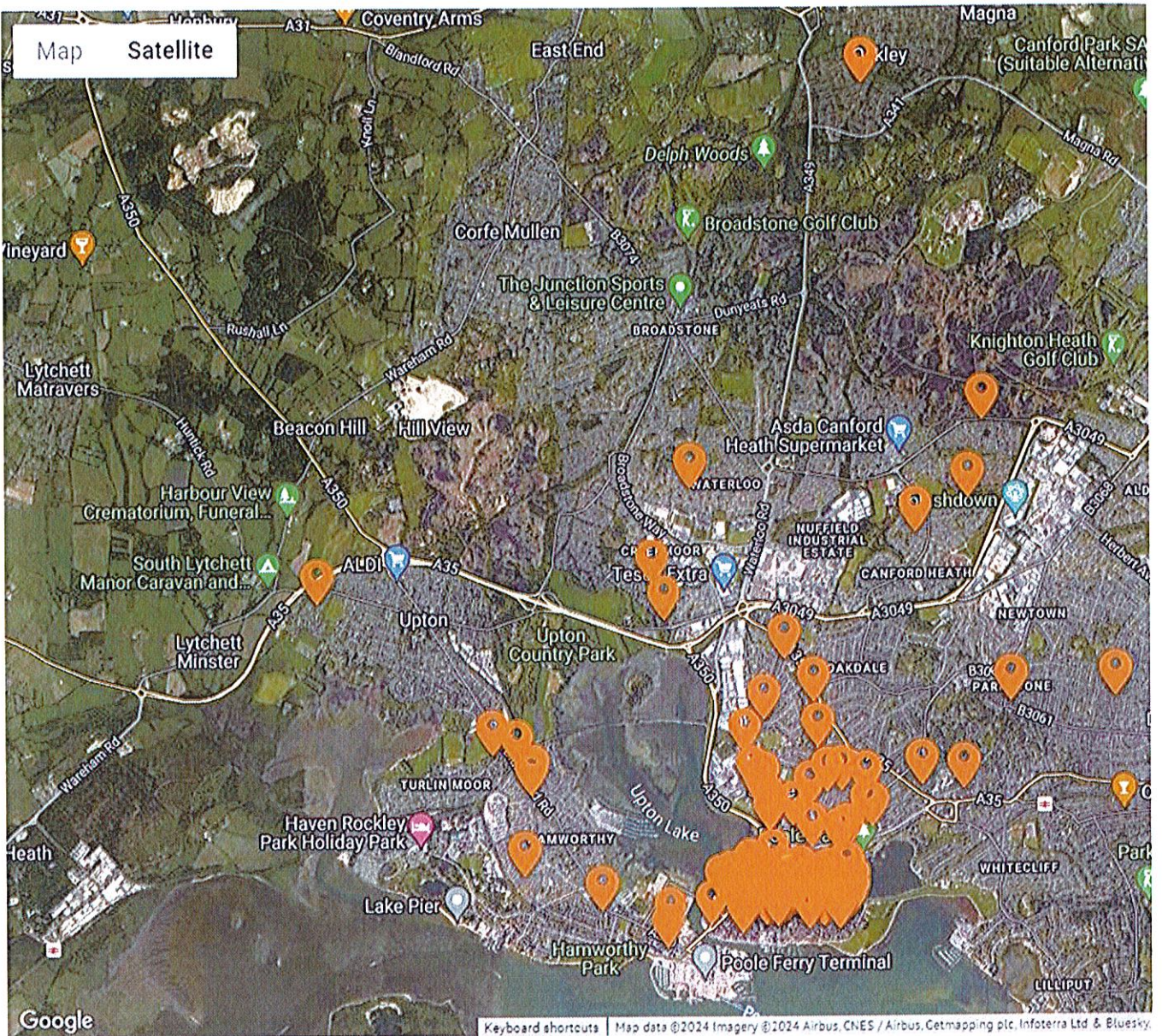
Children at the Heart of everything that we do, is our school moto!

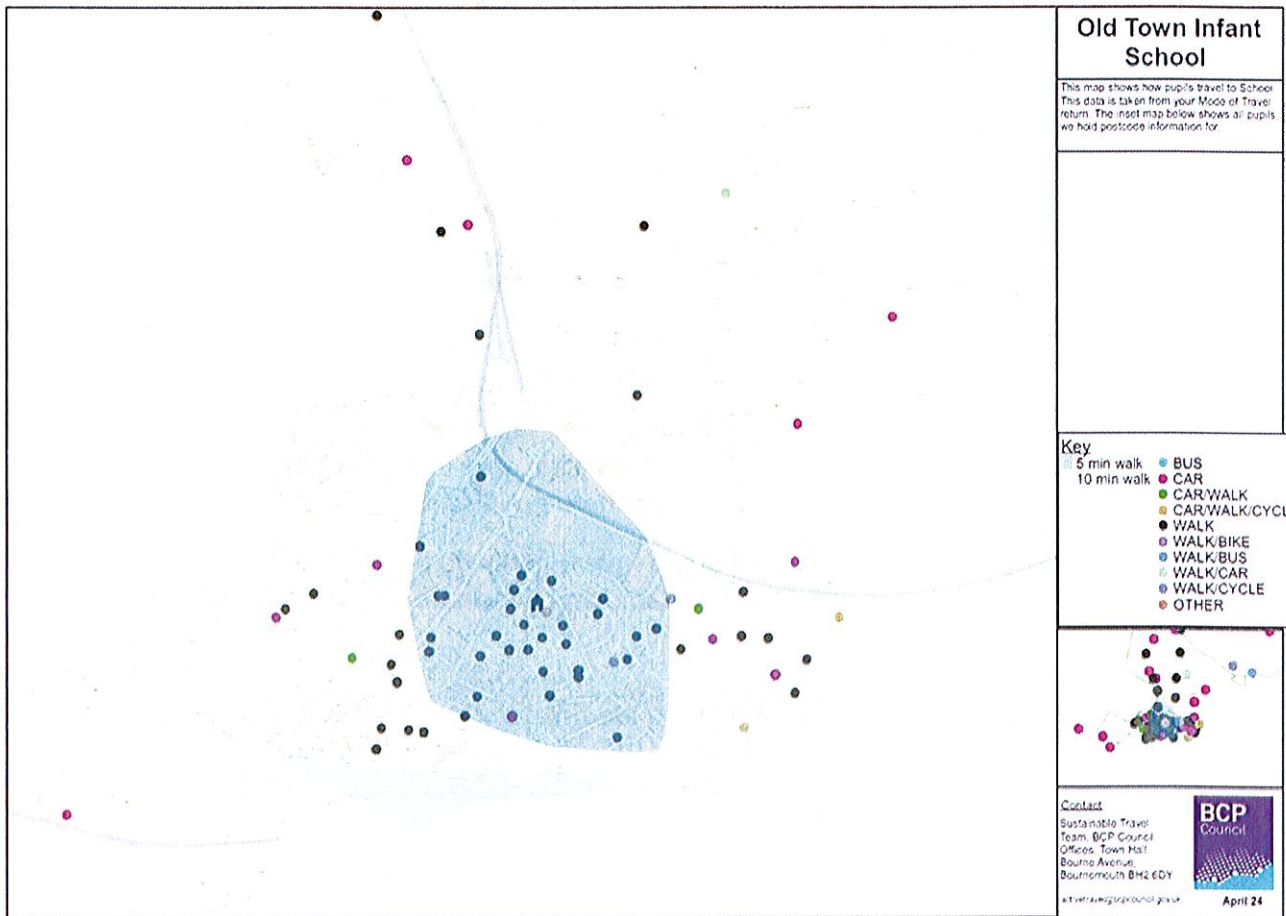
As a school the health and welfare of our children is crucial to everything that we do. The choices that are made concerning how the children travel to and from school can benefit their physical and mental health. It has also been shown that getting active in the morning can increase concentration throughout the school day.

We actively encourage children to walk/scoot/cycle all or part of the way to school. We have installed a new bike shelter and three mushroom scooter pods for storage. We also offer free parking permits for Sainsbury's car park for use during school drop off and pick up times.

We appreciate that there are certain situations, where it is necessary to drive to the school, but would like to draw attention to the fact that there is very limited street parking, and the school car park is to be used by staff and the Winchelsea School minibuses only.

Map showing where the children live in relation to the school.



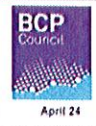


Old Town Infant School

This map shows how pupils travel to School. This data is taken from your Mode of Travel return. The inset map below shows all pupils we hold postcode information for.

- Key**
- 5 min walk
 - 10 min walk
 - BUS
 - CAR
 - CAR/WALK
 - CAR/WALK/CYCLI
 - WALK
 - WALK/BIKE
 - WALK/BUS
 - WALK/CAR
 - WALK/CYCLE
 - OTHER

Contact
 Sustainable Travel
 Team, BCP Council
 Offices, Town Hall
 Bourne Avenue
 Bournemouth BH2 6DY
sustainable@bpcouncil.gov.uk



Site Survey of Existing Safety Measures

Speed Limits, crossings, traffic calming etc	<ul style="list-style-type: none"> - The Speed Limit on Green road is 20mph. - The school is situated on a one-way road in a residential area. - There is a new Zebra crossing in place at the Baiter end of Green road; there is also a Zebra crossing and Pelican crossing on Lagland Street.
Controlled Zone for Parking	<ul style="list-style-type: none"> - There is a 2 hour no return within 1 hour /resident parking restriction area along the road. These are usually quite full. There are also double yellow lines.
Footpaths/Pavements	<ul style="list-style-type: none"> - There are pavements on both sides of Green road; these are suitable for pushchairs and pedestrians to use.
Separate Entrance for Cars/Pedestrians	<ul style="list-style-type: none"> - Vehicles are not permitted on site, apart from exceptional circumstances and during school holidays.
Staff/Visitors Car Parking Available	<ul style="list-style-type: none"> - There is a small staff car park for ---- members of staff to use, with a purchased permit from the Council. All other staff members and visitors have the use of a permit to park in Sainsbury's car park free of charge. - Both of these provisions are for term time only.
Local Car parks	<ul style="list-style-type: none"> - Sainsbury's car park is approx. a 3-minute walk from the school. Free permits issued to Parents to use at pick up and drop off times.
Bus Stops and rail stations	<ul style="list-style-type: none"> - The bus station and Train Station are a 5-10 minute walk from the school. There is a bus stop in Lagland Street for a bus to and from Hamworthy and for a town centre circular route bus. This is also the bus stop for Oakdale Junior School pupils.

Existing Cycle/scooter shelters	- We currently have a bike shelter to hold 12 bikes and 3 scooter pods that each hold 12 scooters.
--	--

School Travel Surveys

Use this section to highlight the headlines from your staff, parent and pupil travel surveys. Detail how many responses you received and note how many children and staff you have on role.

In October 2023 we asked the children from reception Yr1 Yr2 and Winchelsea using a hands up exercise how they came to school – 98% of children attended school that day.

How did you get to school	Number of children	Percentage of Students
Car	38	25%
Walking	79	52%
Bus/Mini Bus	19	13%
Scooter	12	8%
Bicycle	1	1%
Taxi	2	1%

- Based on the pupils enrolment forms the majority of our students walk or scoot to school. There are families that have children at alternative schools that need to drive to ensure drop off for other school.
- It is often commented on by our parents that they are put off walking because of the amount of dogs mess on Green Road.
- Any dogs mess/broken glass immediately outside the school the Site Manager clears, otherwise we report this to the council.

Active travel promotion

Use the table below to detail your school program of activities that support active and sustainable travel.

Website and comms	<ul style="list-style-type: none"> - The School prospectus is on the school website. This states how we encourage our children to walk, cycle or scoot to school. Also that there is very limited parking by the school and we therefore offer parking permits for Sainsbury's to use at drop off and pick up times. - There is a section on our School website detailing the schools travel plan. - Open evenings for the school, mention our expectations for travelling to school.
Scootability	<ul style="list-style-type: none"> - In the past, we have offered scootability to all of our Yr1 and Yr2 students. Unfortunately, at present due to tight budgets we have been unable to offer it this year. This will be an every other year event.
Incentive schemes	<ul style="list-style-type: none"> - From September we will be signing up for the Living Streets Walk to School Challenge. This will enable children that walk to school to be rewarded with a badge. - During May we will be having our School's health week, during this we will be encouraging children to walk the daily mile round the school playground. - During World Book Day we held a sponsored walk for reading event around the school grounds. Children and their grown ups were encouraged to do as many laps around the school as they could to help raise much needed funds for new school books. The children really enjoyed the day, and this promoted how to walk safely in a busy environment.
Road Safety	<ul style="list-style-type: none"> - We often have visitors to the school to promote to the children the importance of staying safe on the streets, both where traffic and strangers are concerned. We had a whole school assembly this year from the STEPS safety training team and Last year they came out and delivered a workshop to the children.
School Streets	<ul style="list-style-type: none"> - It would be advantageous to set up a school street, as we occasionally encounter unsafe drivers speeding along the one-way system and parking illegally outside the school gates. If we were able to restrict the number of vehicles

	coming down the road to residents and the necessary parents with needs, it would make school drop off and pick up a much safer environment.
Cycle and scooter parking at school	- We have installed a new bike shelter that holds 12 bikes, staff bikes use this more but we do have an occasional couple of children's bikes, we also have 3 mushroom scooter pods that each hold 12 scooters. The scooter pods do sometimes get quite full but are adequate for our needs at present.

Key school issues –

Use your survey results and the above tables to help you establish what your key school issues and concerns are. Think SMART as well as long and short term.

Concern	Solution	Benefits
High levels of idling cars outside the school gate Cars illegally parking to drop children off. Children being driven short distances to school.	<ul style="list-style-type: none"> - Encourage parents to use the parking permits for Sainsbury's. - Traffic wardens to do random checks at school pick up and drop times - Encourage more active travel, incentives for children. 	<ul style="list-style-type: none"> - Health benefits. Children will breath in less car fumes. - Safer area. - Healthier children, burning of some of their excess energy to enable better concentration in lessons.
Low levels of pupils cycling and scooting to and from school.	<ul style="list-style-type: none"> - All children to have opportunity for Scootability - Locations and active travel provisions on website and pre-admission information - Run incentive schemes - Take part in daily mile at school. 	<ul style="list-style-type: none"> - Pupils and parents know what's available and its location - Increased parent confidence - Less congestion around school - Improved pupil health - Improved air quality at school

Aims, objectives and targets

Each objective should support addressing your key school issues. Think about your targets and how you will monitor the progress of these. Use your finding from 'what are we currently doing' to help influence this. Objectives should be SMART.

	MAIN TARGETS	TARGET DATE
1	To reduce the percentage of parents driving their children directly to school area, by 5%. Currently 12 % of our children that come to school by car the parents park immediately outside of the school.	Annual Review
2	To increase the percentage of children walking at least part of the way to school to 60%. Currently at 52%	Annual Review
3	To increase the percentage of children cycling to school from 1% to 2%	Annual Review
4	To increase awareness of park and stride locations and lift share. Sainsbury's permits offered to all parents.	Annual Review

Action Plan

Target	Resource required	Person responsible	Measure of success	Deadline
To reduce the percentage of parents driving their children directly to school area, by 5%	<ul style="list-style-type: none"> - Promotion of the parking permit scheme at Sainsburys via letters, parent email and website - Staff resource and buy in required - Completed STP with awareness of actions raised to staff and parents - Calendar of incentive schemes that encourage active travel - Bikeability 	PE lead Office staff	<ul style="list-style-type: none"> - % of car journeys reduces year on year - Less traffic outside the school 	May 25

	<ul style="list-style-type: none"> - WoW Living Streets tracker - Scooterbility 			
To increase the percentage of children walking at least part of the way to school to 60% from 52%	<ul style="list-style-type: none"> - Promoting WOW and other promotional activities - Details of travel expectations on the website and in schools comms - Promote the park and stride car park location - Rewards for active classes (WOW, etc) 	PE lead Office Staff	<ul style="list-style-type: none"> - Increase in walking to school - Reduced cars around the school - Healthier children - Cleaner air around school - Parent understanding of travel offers and expectations 	May 2025
To increase the percentage of children cycling to school from 1% to 2%	<ul style="list-style-type: none"> - Promote the BCP learn to ride holiday courses - Look at the possibility of booking learn to ride sessions in school - Participate in the Sustrans Big Walk and Wheel - Highlight where the cycle parking is in school and include it when you show new parents round 	PE lead and office staff	<ul style="list-style-type: none"> - Uptake of learn to ride and more children gaining confidence with cycling - Increased use of cycle parking in school 	May 2025
To increase awareness of park and stride locations and lift share. Sainsbury's permits offered to all parents.	<ul style="list-style-type: none"> - Raise awareness of www.liftshare.com - Produce a map for the school website to show how close Sainsburys is detailing the crossing points and time it takes to walk and add to website 	PE Lead Office BCP Council for the map	<ul style="list-style-type: none"> - Increased use of the parking permit - Completed and communicated map - Reduced cars at the school gate 	May 25

	and send out to parents Highlight the concerns regarding idling vehicles outside the school gate on Air Quality and how this negatively impacts children's health in the long term			
--	---	--	--	--

Sign off-

Name	Job Role	Date
Doug Gubbins	Head Teacher	6/6/24
Annette Fricker	Site Manager	06/06/2024
Amanda Shorey	Travel Planning Officer, BCP Council	06/06/2024

Next review due – May 2025