



## OLD TOWN INFANT SCHOOL & NURSERY

Green Road Poole Dorset, BH15 1QB

Tel:01202 673966 Fax:01202 687662

E-mail: [Oldtown.office@coastalpartnership.co.uk](mailto:Oldtown.office@coastalpartnership.co.uk)

[www.oldtowninfantschool.co.uk](http://www.oldtowninfantschool.co.uk)



Headteacher: Mr Douglas Gubbins BA (Hons), PGCE, NPQH

### WEEKLY BULLETIN: Friday 13<sup>th</sup> February 2026

Monday 23 <sup>rd</sup> February 2026	INSET DAY: School and Nursery closed
Tuesday 24 <sup>th</sup> February 2026	Year 2 P.E day – children to attend school in their P.E kit Story Café 1500-1630
Wednesday 25 <sup>th</sup> February 2026	Reception P.E day – children to attend school in their P.E kit PINS Parent Coffee Morning 0900-1030 Year 2 walk to Poole Harbour (am) Football Club after school – bookings (now available up to the end of term) made via Arbor. <i>Children to be dismissed from the hall.</i>
Thursday 26 <sup>th</sup> February 2026	Year 1 P.E day – children to attend school in their P.E kit Tennis Club after school – bookings via Premier Education
Friday 27 <sup>th</sup> February 2026	Reception and Year 1 P.E day – children to attend school in their P.E kit.

#### Spellings for week commencing 23.02.26

Year 1	some, come
Year 2	pretty, beautiful

#### Headlines

- **Please note the above change of P.E days for Years 1 and 2**
- School attendance this week is 92.8%. The class with the highest attendance was Angelfish with 95.7% attendance.
- On Friday 6<sup>th</sup> March we are running a 'Understanding your child's behaviour' workshop in the hall between 0900-1000, please see poster below.
- Many thanks to everyone who has donated towards the development of our Discovery Garden. We have been blown away by the generosity and are almost at the £1000 mark. Your support is very much appreciated. If you would like to find out about our plans or make a donation, please visit:  
[https://www.justgiving.com/crowdfunding/oldtowndiscoverygarden?utm\\_medium=CF&utm\\_source=CL](https://www.justgiving.com/crowdfunding/oldtowndiscoverygarden?utm_medium=CF&utm_source=CL)



# UNDERSTANDING YOUR CHILD'S BEHAVIOUR

**Old Town Infant School**  
**Date: Friday 6th March**  
**Time: 9-10am**

Are you struggling to understand why your child behaves the way they do? All children misbehave but when it impacts family life it can feel isolating. This workshop will introduce the principles of our Supporting Parenting group.

The session aims to:

- help you understand why your child may misbehave
- show the importance of connection
- let you know how to sign up to the group

**No need to book! We just ask you inform the school so we have an idea of numbers - the school will be providing tea and coffee from 9!**

**Peter**



**EMHP**



SCAN  
ME



FREE  
RESOURCES



@DORSETMHST

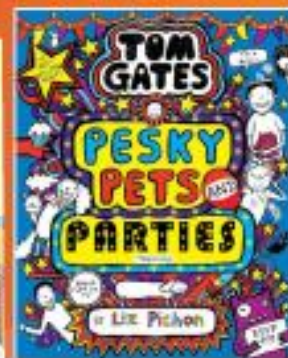
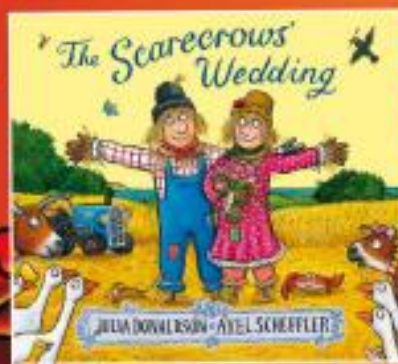
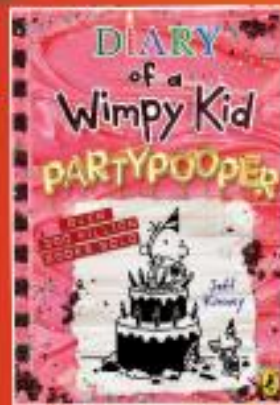
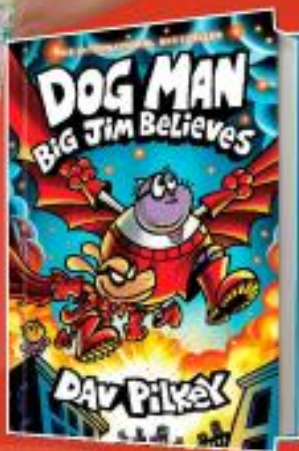
SCHOLASTIC TRAVELLING BOOKS

Every book you buy earns  
**FREE BOOKS**  
for our school!

# COME TO OUR BOOK FAIR

AND FIND YOUR NEXT FAVOURITE READ!

Art © Dan Pines, Dog Man TM © Dav Pilkey



**GO  
ALL  
IN.**

National  
Year of  
Reading  
2026

DATE:

Wednesday 11<sup>th</sup> March – Monday 16<sup>th</sup>  
March 2026

TIME:

1520 - 1545

LOCATION:

School Hall – enter via back playground

Scan to pay  
securely online!



Key dates \*Please check as new dates/events added\*

- Monday 16<sup>th</sup> February to Friday 20<sup>th</sup> February – HALF TERM
- Monday 23<sup>rd</sup> February – INSET DAY. SCHOOL CLOSED.
- Year 1 trip to Poole Library (as part of World Book Day week) Monday 2<sup>nd</sup> March 2026
- Reception trip to Poole Library (as part of World Book Day week) Wednesday 4<sup>th</sup> March 2026
- **Understanding your child's behaviour workshop in the school hall. Friday 6<sup>th</sup> March 0900-1000.**
- Year 2 trip to Poole Library (as part of World Book Day week) Friday 6<sup>th</sup> March 2026
- PTFA Easter Egg Trail Tuesday 10<sup>th</sup> March 1515-1615
- Wednesday 11<sup>th</sup> March – Monday 16<sup>th</sup> March – Book fair in the school hall
- Non-Uniform day for Easter Chocolate donations – Friday 13<sup>th</sup> March
- PTFA Easter Paint and Play event – Friday 20<sup>th</sup> March 1530-1800
- Health Week: Week commencing 14<sup>th</sup> April 2026
- PTFA Family games night 1530-1800 – Friday 15<sup>th</sup> May
- Sports Day: Friday 17<sup>th</sup> April 2026: Nursery and Reception (am), Year 1 and 2 (pm)
- Old Town Community Picnic: Friday 1<sup>st</sup> May 2026, 1200-1400
- PTFA Summer Fair – Friday 3<sup>rd</sup> July
- Year 2 Leavers Assembly: Tuesday 21<sup>st</sup> July 2026

Companies House Number:  
**09628750**